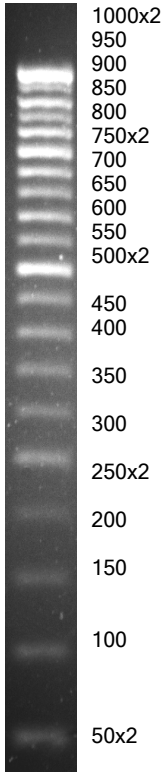


DNA Molecular Weight Marker, M50

Cat.No MWM-50
Sufficient for 100 lanes

50 bp DNA Ladder



2,5% agarose
1xTAE

General Description:

Plasmid DNA was completely digested with endonuclease restriction, phenol/chlorophorm extracted, ethanol precipitated and dissolved in storage buffer.

The DNA Ladder yields the following 25 discrete fragments (in base pairs): 1000x2, 950, 900, 850, 800, 750, 750x2, 700, 650, 600, 550, 500x2, 450, 400, 350, 300, 250x2, 200, 150, 100, 50x2.

The recommended amount of marker to load on an agarose gel 0.25-0,5µg (2,5µl) per lane.

Concentration: 0,2 mg/ml.

Storage Buffer: 10mM Tris-HCl (pH 8.0) and 1mM EDTA.

Store at -20°C.